

# **LandingZone** **Thunderbolt 4 Docking Station** **User's Manual**





# Table of Contents

|                                    |           |
|------------------------------------|-----------|
| SAFETY INSTRUCTIONS .....          | 1         |
| COPYRIGHT .....                    | 1         |
| TRADEMARKS .....                   | 1         |
| <b>REGULATORY COMPLIANCE .....</b> | <b>2</b>  |
| FCC CONDITIONS .....               | 2         |
| CE.....                            | 2         |
| WEEE INFORMATION .....             | 2         |
| <b>INTRODUCTION .....</b>          | <b>3</b>  |
| FEATURES.....                      | 4         |
| PACKAGE CONTENTS .....             | 5         |
| SYSTEM REQUIREMENTS .....          | 5         |
| <b>PRODUCT OVERVIEW .....</b>      | <b>6</b>  |
| <b>CONNECTION .....</b>            | <b>8</b>  |
| <b>DISPLAY CONFIGURATION .....</b> | <b>9</b>  |
| MULTI-MONITOR CONFIGURATION.....   | 9         |
| EXTEND MODE .....                  | 10        |
| MIRROR MODE.....                   | 11        |
| SET THE PRIMARY MONITOR .....      | 12        |
| <b>AUDIO CONFIGURATION .....</b>   | <b>13</b> |
| <b>SPECIFICATION .....</b>         | <b>15</b> |



Before attempting to connect, operate or adjust this product, please save and read the User's Manual completely. The style of the product shown in this User's Manual may be different from the actual unit due to various models.

## Safety Instructions

Always read the safety instructions carefully:

- ◆ Keep this User's Manual for future reference
- ◆ Keep this equipment away from humidity
- ◆ If any of the following situation arises, get the equipment checked by a service technician:
  - The equipment has been exposed to moisture.
  - The equipment has been dropped and damaged.
  - The equipment has obvious sign of breakage.
  - The equipment has not been working well or cannot get it to work according to the User's Manual.

## Copyright

This document contains proprietary information protected by copyright. All right are reserved. No part of this manual may be reproduced by any mechanical, electronic or other means, in any form, without prior written permission of the manufacturer.

## Trademarks

All trademarks and registered trademarks are the property of their respective owners or companies.



# Regulatory Compliance

## FCC Conditions

This equipment has been tested and found to comply with Part 15 Class B of the FCC Rules. Operation is subject to the following two conditions: (1) This device may not cause harmful interference. (2) This device must accept any interference received and include interference that may cause undesired operation.

## CE

This equipment is in compliance with the requirements of the following regulations: EN 55032/EN 55024: CLASS B

## WEEE Information

For EU (European Union) member users: According to the WEEE (Waste electrical and electronic equipment) Directive, do not dispose of this product as household waste or commercial waste. Waste electrical and electronic equipment should be appropriately collected and recycled as required by practices established for your country. For information on recycling of this product, please contact your local authorities, your household waste disposal service or the shop where you purchased the product.





# Introduction

The Thunderbolt 4 Docking Station is a professional-level docking station designed for demanding, high-productivity workflow, and is based on the Intel Thunderbolt 4 Goshen Ridge controller. This versatile device is backwards-compatible with Thunderbolt 3, USB 2.0, VESA Alternate Mode (MFDP), and USB4. It is also compatible with both Windows and macOS systems.

This docking station provides a fully-powered solution with dynamic PD up to 96W to charge your laptop. The equipped Thunderbolt 4 / USB4 downstream ports can connect Thunderbolt and USB-C peripherals with lightning-fast 40Gbps transfer speed. High-resolution video of up to 8K@30Hz can be enjoyed via the HDMI 2.1 port.

This docking station also provides 2.5GbE Ethernet, USB-A 3.1 10G ports with BC 1.2 / Apple Charge, SD 4.0 Card Reader and Hi-RES Two-Way Audio for maximum connectivity.



# Features

- Thunderbolt 4 Technology
- Downstream Ports
  - Thunderbolt 4 / USB4 x 2
  - HDMI 2.1 x 1 up to 8K@30Hz
  - USB-A 3.1 10G x 4 with BC 1.2 (5V/1.5A) and Apple Charge 2.1A x 1
- Upstream PD Charging:
  - Supports 5 /9 /15 / 20V@4.8A
  - Up to 96W
- RJ45 2.5 Gigabit Ethernet Port
- SD 4.0 Card Reader
- Hi-RES Two-Way Audio Jack
- Kensington Security Slot
- LandingZone Power Adapter Port
- Thunderbolt 4 Indicator Light
- Power Indicator Light
- Power Button



## Package Contents

|   |                                           |    |
|---|-------------------------------------------|----|
| ◆ | LandingZone Thunderbolt 4 Docking Station | x1 |
| ◆ | Thunderbolt Cable                         | x1 |
| ◆ | Power Adapter                             | x1 |
| ◆ | User Manual                               | x1 |

## System Requirements

- ◆ Supported Operating Systems
  - Windows® 10
  - macOS Big Sur 11.2 or later



# Product Overview

## Front

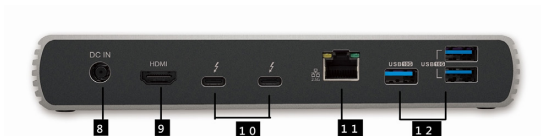


| Item                                   | Description                                                                      |
|----------------------------------------|----------------------------------------------------------------------------------|
| <b>1. SD 4.0 Card Reader</b>           | Copy photos, videos, and other data from an SD card with high speed transmission |
| <b>2. USB-A Gen2 10G</b>               | Supports BC 1.2 (5V / 1.5A) and Apple Charge 2.1A                                |
| <b>3. Two-Way Audio Jack</b>           | Connect to a headset or other audio device                                       |
| <b>4. Thunderbolt 4</b>                | Thunderbolt 4 with PD 3.0 charging to laptop                                     |
| <b>5. Power Indicator</b>              | Light shines green when powered on                                               |
| <b>6. Thunderbolt 4 Link Indicator</b> | Light shines blue when a Thunderbolt embedded device is connected                |
| <b>7. Power Button</b>                 | Power ON/OFF                                                                     |





## Rear

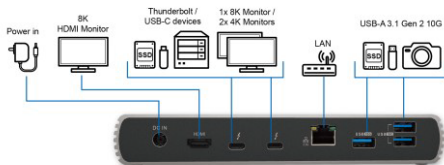


| Item | Description                           |                                      |
|------|---------------------------------------|--------------------------------------|
| 8.   | <b>Power Port</b>                     | Connect to the power adapter         |
| 9.   | <b>HDMI 2.1</b>                       | Connect to HDMI monitor              |
| 10.  | <b>Thunderbolt 4 /<br/>USB 4 Port</b> | Connect to Thunderbolt / USB devices |
| 11.  | <b>RJ45 Port</b>                      | Connect to Ethernet                  |
| 12.  | <b>USB-A Gen2<br/>10G</b>             | Connect to USB devices               |



# Connection

To connect USB peripherals, Ethernet, and other devices, follow the illustrations below to connect devices to the correct connectors.





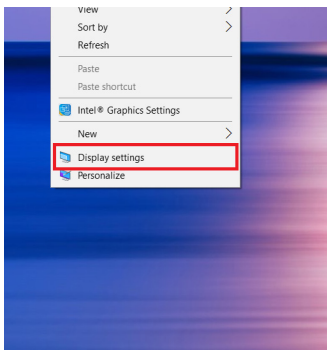
# Display Configuration

## Multi-monitor configuration

Once the extra monitors are connected, they can be configured to either **Mirror mode**, **Extend mode** or set as the **primary display**.

## Windows® OS

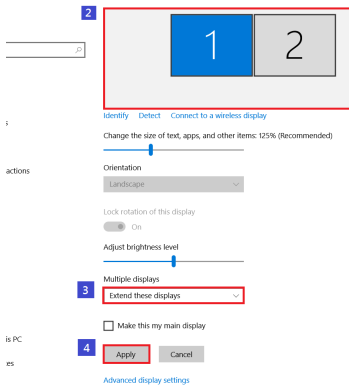
Position the mouse anywhere on the **Windows Desktop**, Right-click and select **Display Settings**.





## Extend mode

1. Refer to the **Multi-monitor configuration** section to bring up the configuration window.
2. Select the preferred monitor at top of the page.
3. Select **Multiple Displays > Extend these displays**.
4. Click **Apply** to confirm and exit.



5. Once the setting is completed, simply drag and drop the application icons or the opened windows to the add-on monitor. However, some applications may not support displaying on the extended desktop.



## Troubleshooting

a. Cursor disappeared

If the status remains in the extended mode but the docking station is disconnected, the desktop will still be panned to the add-on monitor. The cursor may not be found on the primary monitor in such a case. If it happens, connect the add-on monitor through the docking station again or keep moving the mouse.

b. Video playback in extended mode

If the video or DVD playback quality is poor or low performance in extended mode, please playback it on the primary monitor instead of the add-on monitor.

## Mirror mode

1. Refer to the **Multi-monitor configuration** section to bring up the configuration window.
2. Select the preferred monitor at top of the page.
3. Select **Multiple Displays > Duplicate these displays**.
4. Click **Apply** to confirm and exit.



## Set the primary monitor

1. Refer to the **Multi-monitor configuration** section to bring up the configuration window.
2. Select the preferred monitor at top of the page.
3. Check the box of **Make this my main display**.



**NOTE:** For some computers, you may need to disable the main display by unchecking the box of **Extend the desktop onto this monitor** or **Extend my Windows desktop onto this monitor**.

4. Click **Apply** to confirm and exit.

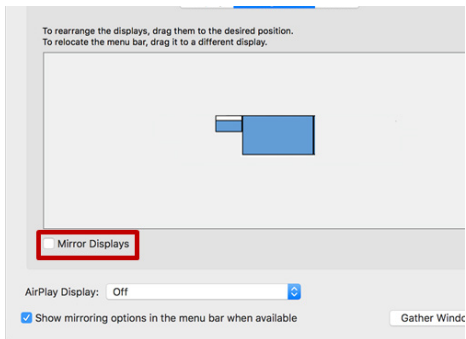


## Mac OS®

1. Click on the **Apple** sign at the top left corner of the screen and select **System Preferences.../ Displays**.
2. To rearrange the displays, drag them to the desired position.

To relocate the menu bar, drag it to a different display.

To switch to **Mirror Mode**, tick the box in front of **Mirror Displays**.





# Audio Configuration

By default, when the docking station is connected to a computer, the audio configuration may be changed to **USB (Multimedia) Audio Device** automatically (this setting depends on models). If it does not work, follow the steps below to setup.

1. Open **Control Panel** and then select the hardware and sound icon.
2. Click **Sound > Manage audio devices** and then select **USB Audio Device**.

!

Select a playback device below to modify its settings:



Speakers  
USB Audio Device  
Working

Configure

Set Default

Properties





# Specification

|                     |                       |                                                                                                                |
|---------------------|-----------------------|----------------------------------------------------------------------------------------------------------------|
| User Interface      | Upstream              | Thunderbolt/USB-C port supports up to PD 96W                                                                   |
|                     | Downstream            | Thunderbolt 4/USB 4 x2<br>USB-A 3.1 Gen 2 x3<br>USB-A 3.1 Gen 2 x1, with BC1.2 (5V/1.5A) and Apple Charge 2.1A |
| Video Output        | Type                  | HDMI 2.1 x1<br>Up to 8K@30Hz                                                                                   |
| Ethernet            | Type                  | RJ45 Gigabit Ethernet x1 supports MAC Address pass through<br>10/100/1000/2500Mbps                             |
| Card Reader         | Type                  | SD 4.0 x1                                                                                                      |
| Audio               |                       | Hi-RES Headset jack x1                                                                                         |
| Power               | Power Mode            | Self-powered                                                                                                   |
|                     | Power Adapter         | Input: AC 100-240V<br>Output: DC 20V/6.75A                                                                     |
| Working Environment | Operation Temperature | 0~35 degree                                                                                                    |
|                     | Storage Temperature   | -20~70 degree                                                                                                  |
| Compliance          |                       | CE, FCC, VCCI, RCM                                                                                             |

Thunderbolt 4 Hub  
User's Manual



V1.0