



# THUNDERBOLT™ 3 DOCK



User Manual





# Table of Contents

SAFETY INSTRUCTIONS .....	1
COPYRIGHT .....	1
TRADEMARKS .....	1
<b>REGULATORY COMPLIANCE .....</b>	<b>2</b>
FCC CONDITIONS .....	2
CE .....	2
WEEE INFORMATION .....	2
<b>INTRODUCTION .....</b>	<b>3</b>
FEATURES .....	4
PACKAGE CONTENTS .....	5
SYSTEM REQUIREMENTS .....	5
<b>PRODUCT OVERVIEW .....</b>	<b>6</b>
<b>CONNECTION .....</b>	<b>8</b>
<b>AUDIO CONFIGURATION .....</b>	<b>11</b>
<b>SPECIFICATIONS .....</b>	<b>12</b>



Before attempting to connect, operate or adjust this product, please save and read the User's Manual completely. The product shown in this User's Manual may be different from the actual unit due to variation in models.

## Safety Instructions

Always read the safety instructions carefully:

- Keep this User's Manual for future reference
- Keep this equipment away from humidity
- If any of the following situations occur, have the equipment checked by a service technician:
  - The equipment was exposed to moisture.
  - The equipment was dropped and damaged.
  - The equipment has obvious signs of breakage.
  - The equipment is not working well or will not work properly according to the User's Manual.

## Copyright

This document contains proprietary information protected by copyright. All rights are reserved. No part of this manual may be reproduced by any mechanical, electronic or other means, in any form, without prior written permission of the manufacturer.

## Trademarks

All trademarks and registered trademarks are the property of their respective owners or companies.



# Regulatory Compliance

## FCC Conditions

This equipment has been tested and found to comply with Part 15 Class B of the FCC Rules. Operation is subject to the following two conditions: (1) This device may not cause harmful interference. (2) This device must accept any interference received and include interference that may cause undesired operation.

## CE

This equipment is in compliance with the requirements of the following regulations: EN 55032/EN 55024: CLASS B

## WEEE Information

For EU (European Union) member users: According to the WEEE (Waste electrical and electronic equipment) Directive, do not dispose of this product as household waste or commercial waste. Waste electrical and electronic equipment should be appropriately collected and recycled as required by practices established for your country. For information on recycling of this product, please contact your local authorities, your household waste disposal service or the shop where you purchased the product.





# Introduction

The Thunderbolt 3 PD Dock is designed for extra connectivity demands. With this docking station, you can extend the connection of a computer to more USB peripherals such as Ethernet network, the speaker and the microphone. Adopting PD Charging technology, upstream charging function through Thunderbolt interface, you can charge the laptop. In addition, the driver is included in the docking station; therefore, you do not need to install extra drivers. Just plug and play; then you are connected with Thunderbolt embedded device.

The docking station is also equipped with video output. With DP1.4 port, you can mirror your primary screen or extend the desktop allowing visibility of more applications at the same time. With enhanced expansion capability and video output function, this docking station is the most versatile accessory that also complements your home or office space.



## Features

- Thunderbolt 3 Technology
- Thunderbolt 3 Port (For Computer Connection)
  - Upstream PD Charging: 5/9/15/20V, up to 85W
- Thunderbolt 3 Port (For Peripherals)
- DisplayPort (Supports 8k @ 30Hz)
- 2x USB 3.1 Type-C Port
- 1x USB 3.0 Type-A Port (Supports BC 1.2)
- 3x USB 3.0 Type-A Ports
- RJ45 Gigabit Ethernet Port
- SD 4.0 Card Reader
- Two-Way Audio Port
- Kensington Security Slot
- LandingZone Power Adapter Port
- Thunderbolt 3 Indicator Light
- Power Indicator Light
- Power Button



## Package Contents

- LandingZone Thunderbolt 3 Dock
- Thunderbolt Cable
- Power Adapter (20V/9A – 180W)
- User's Manual

## System Requirements

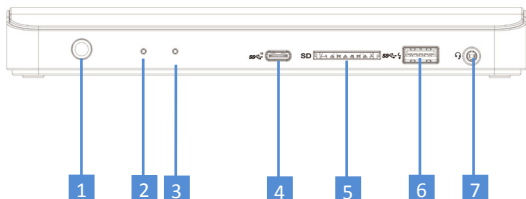
- Supported Operating Systems
  - Windows® 10
  - Mac OS®





# Product Overview

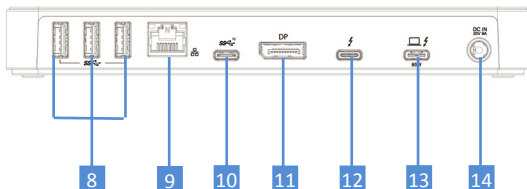
## Front



Item	Description
1. Power Button	Power ON/OFF
2. Power Indicator	Light shows green when powered on
3. Thunderbolt 3 Link Indicator	Light shows blue when a Thunderbolt embedded device is connected
4. USB-3.1 Type-C	Connect to a USB-C device
5. SD 4.0 Card Reader	Copy data, photos, songs, videos, movies, and more from an SD card with high speed transmission
6. USB 3.0 Type-A	Connect to a USB 3.0 device (Supports BC 1.2)
7. Two-Way Audio Jack	Connect a headset or other audio device



## Rear

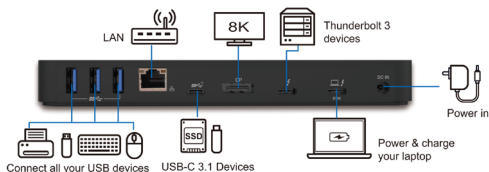


Item	Description	
8.	USB 3.0 Type-A	Connect to USB 3.0 devices
9.	RJ45 Port	Connect to an Ethernet cable
10.	USB-3.1 Type-C	Connect to a USB-C device
11.	DisplayPort	Connect to a DisplayPort monitor
12.	Thunderbolt 3 Port	Connect to Thunderbolt 3 device
13.	Thunderbolt 3 Port	Connect to the host system or computer
14.	Power Port	Connect to the power adapter



# Connection

To connect USB peripherals, Ethernet, and other devices, follow the illustrations below to connect devices to the correct connectors.





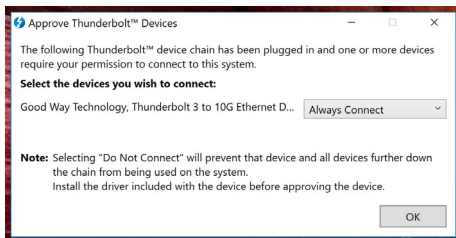
---

**NOTE:** The following strings and screenshots may vary between operating systems

---

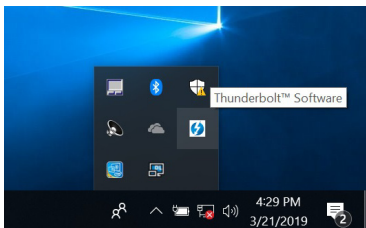
### Windows® 10

1. Select **Always Connect** to approve the device connection and click **OK**.

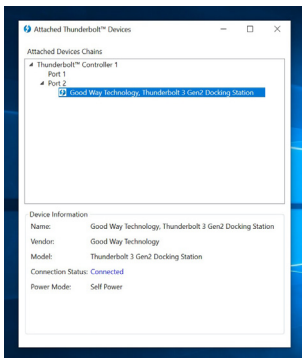




2. To confirm that the docking station is connected, open **Thunderbolt Software** program from System Tray at the bottom right of the desktop.



3. Once the **Thunderbolt Software** program is opened, the docking station should display as **Connected**.



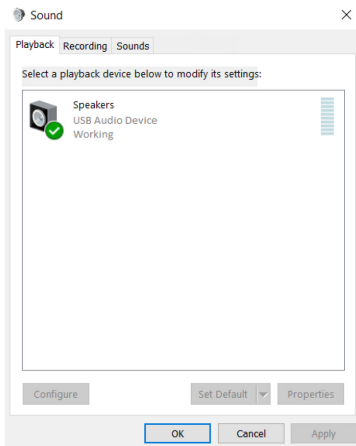


# Audio Configuration

By default, when the docking station is connected to a computer, the audio configuration should be changed to **USB (Multimedia) Audio Device** automatically (this setting can depend on the model).

If the audio configuration does not change automatically, follow the steps below to change the audio configuration.

1. Open **Control Panel** and select the hardware and sound icon.
2. Click **Sound > Manage Audio Devices** and select the **USB Audio Device**.





## Specification

User Interface	Upstream	Type-C Thunderbolt 3 x2 (only one port supports PD charging)	
	Downstream	DP1.4 Connector x1	
		USB 3.0 Type-A Female Connector x4 (only one port supports BC 1.2)	
		USB 3.1 Type-C Female Connector x2	
		RJ45 connector x1	
		Combo Audio Jack (IN/OUT) x1	
Video	Resolution	Single 8K@30Hz	
Audio	Channel	2.1 CH	
SD Card Reader	SD	SD 4.0	
Ethernet	Type	10/100/1000 BASE-T	
Power	Power Mode	Self-powered	
	Power Adapter	Input: AC 100-240V	
		Output: DC 20V/9A	
Working Environment	Operation Temperature	0~40 degree	
	Storage Temperature	-20~70 degree	
Compliance		CE, FCC	



V1.0