

OWNER'S MANUAL



For additional languages, please visit **LandingZone.net/user-guides**



DOCK. LOCK. CONNECT.

Dear MacBook Pro® with Retina display Owner,

Thank you for your purchase of the LandingZone DOCK Express. We hope it provides you with great satisfaction. The LandingZone is quite easy to use but, should you need some help with it, this manual is designed to easily walk you through how to use it.

If you have any questions or need support, please feel free to contact us anytime at support@landingzone.net or by calling **888-872-3251**.

Sincerely,
Team LandingZone
infiniWing, Inc.

MODEL NUMBERS

LZ3013AL for 13-inch MacBook Pro with Retina display

LZ3015AL for 15-inch MacBook Pro with Retina display

WHAT'S IN THE BOX?

- LandingZone DOCK Express Secure Docking Station
- Release Lever Travel Clip
- Owner's Manual
- Warranty Card
- Registration Reminder Card

COMPATIBILITY

This device works with:

13-inch MacBook Pro with Retina display models released in October 2012 and October 2013 (Model A1425 + A1502)

15-inch MacBook Pro with Retina display models released in 2012 and October 2013 (Model A1398)

Mini DisplayPort works with most Thunderbolt devices and monitors.

The MacBook Pro requires a MagSafe 2 to charge.

BENEFITS

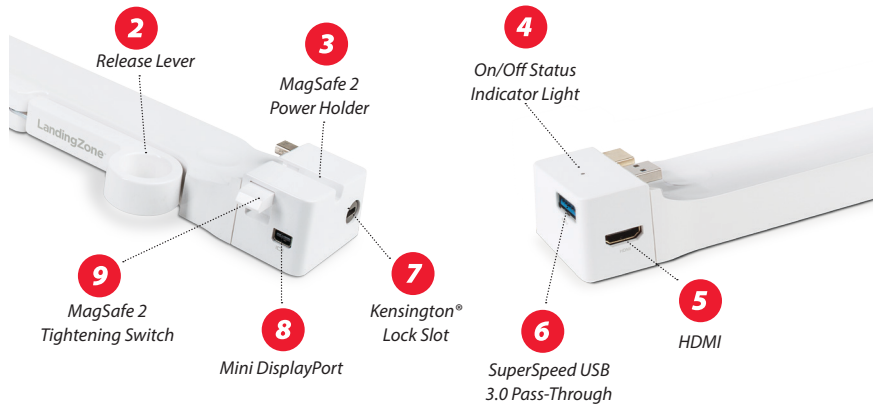
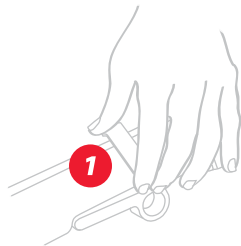
LandingZone DOCK Express is an attractive and simple to use secure docking station for the MacBook Pro with Retina display. You can return from commuting with your computer and simply snap it into the LandingZone on your desk and enjoy the benefits of a complete desktop workstation.

FEATURES

- Single-step docking
- SuperSpeed 3.0 Pass-through
- Mini DisplayPort works with most Thunderbolt devices and monitors
- HDMI port for an external HDMI monitor
- Built-in security port compatible with Kensington Laptop Locks (sold separately) to secure your MacBook Pro
- White on/off status LED on the right wing
- Release Lever Travel Clip for travel

BEFORE YOU BEGIN

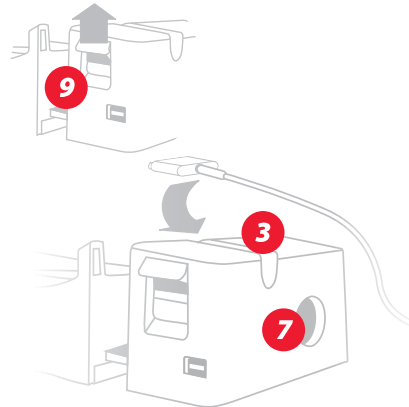
Travel Clip: Remove the Travel Clip **(1)** on the Release Lever **(2)**.
When transporting your LandingZone DOCK Express, you can use the Travel Clip to secure the Release Lever.



DOCKING

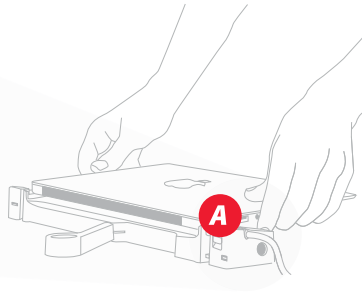
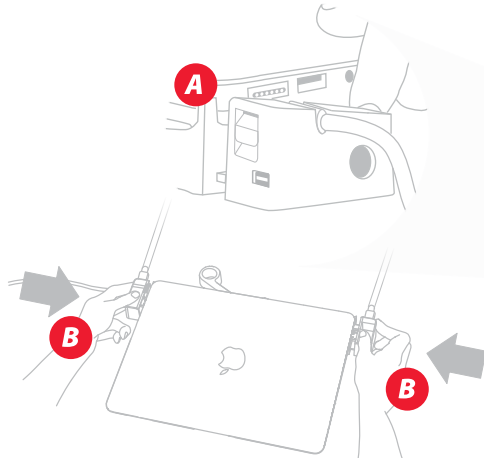
STEP 1: CONNECT POWER & PERIPHERALS

- Make sure the Tightening Switch **(9)** is in the UP position and insert the MacBook Pro's MagSafe 2 power plug into the MagSafe 2 Power Plug Holder **(3)**. Push the Tightening Switch **(9)** down.
- Connect HDMI & peripherals such as another monitor. Add a keyboard, storage device, tablet, or smart phone.
- Optionally, connect a Keyed Laptop Lock (not included). Follow the manufacturer's instructions included with the lock **(7)**.



STEP 2: CONNECTING YOUR MACBOOK PRO WITH RETINA DISPLAY

- Place your closed MacBook Pro with Retina display into the LandingZone DOCK Express until the back of your MacBook Pro with Retina display® touches the two guide posts **(A)**.
- Push both ends **(B)** of the LandingZone DOCK Express gently inward to fully engage with the MacBook Pro. Do not use the Release Lever on the LandingZone DOCK Express when you dock the computer.



UNDocking

STEP 1:

Eject devices in the OS X Finder

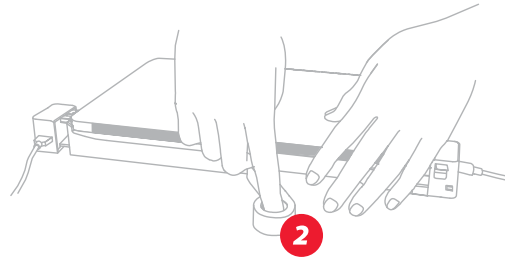
STEP 2:

Unlock if using a lock

STEP 3:

Open the Release Lever **(2)** and lift out your MacBook Pro with Retina display

*If you would like to release the MagSafe 2 plug, flip the Tightening Switch up **(9)***



TROUBLESHOOTING

USB DEVICES ARE NOT WORKING

Make sure that both sides of the LandingZone are completely closed and the connectors are fully inserted into the MacBook Pro with Retina display.

MACBOOK PRO® IS NOT CHARGING

Confirm that you properly inserted the MacBook computer's MagSafe 2 Power adapter into the LandingZone MagSafe 2 power holder (3) and that the switch (9) is pushed down.

WINGS DON'T CLOSE PROPERLY

Make sure that you push the MacBook Pro all the way back to the two guideposts. Before carefully pushing the sides together, align the connectors so that they fit into the MacBook Pro's ports.

MONITORS ARE NOT DISPLAYING

Make sure your external monitor is displaying the correct HDMI mode. For iMac screens, press Command + F2 or Command + Fn + F2 to enter Target Display Mode. When the computer screen is closed, the MagSafe 2 power adapter must be connected to the laptop computer in order to use an external monitor. Go to Displays in your System Preferences. Change your settings to create an ideal workspace.



CUSTOMER SUPPORT

ONLINE SUPPORT

Go to landingzone.net/FAQs

PHONE SUPPORT

Call 888-872-3251 (Monday - Friday, 8:00am - 4:00 pm Pacific Time)

EMAIL SUPPORT

Send email to support@landingzone.net

PROPER OPERATING ENVIRONMENT

- Frequency: 50Hz to 60Hz
- Operating temperature: 50° to 95° F (10° to 35° C)
- Storage temperature: -13° to 113° F (-24° to 45° C)
- Relative humidity: 0% to 90% noncondensing
- Maximum operating altitude: 10,000 feet
- Maximum storage altitude: 15,000 feet
- Maximum shipping altitude: 35,000 feet

CARE & CLEANING

Clean with a soft cloth. Do not use water or cleaning solutions to clean the LandingZone.

When traveling, use the supplied Travel Clip to keep the Release Lever closed.

DISPOSAL

Applicable laws may limit how you can dispose of this product. Accordingly, please make sure you follow your local, state, federal, and country ordinances, laws, regulations, or other guidelines to properly dispose of this product and the accompanying packaging materials.

COPYRIGHT & TRADEMARK INFORMATION

© 2014 InfiniWing, Inc. LandingZone is a registered trademark of InfiniWing, Inc.

Apple, the Apple logo, MacBook Pro, Retina, Mac OS X, MagSafe, Mini DisplayPort, are trademarks of Apple, Inc., registered in the U.S. and other countries. Kensington is a registered trademark of Kensington Computer Group, a division of ACCO Brands. Thunderbolt and the Thunderbolt logo are trademarks of Intel Corporation in the U.S. and/or other countries. HDMI, the HDMI logo and High-Definition Multimedia Interface are trademarks or registered trademarks of HDMI Licensing LLC.

All other company and product names mentioned may be trademarks of their respective companies. Mention of third-party products is for informational purposes only and does not constitute an endorsement or recommendation.

InfiniWing assumes no responsibility with regard to the performance of products mentioned.

For more information about LandingZone products, go to LandingZone.net



For additional languages, visit **LandingZone.net/user-guides**